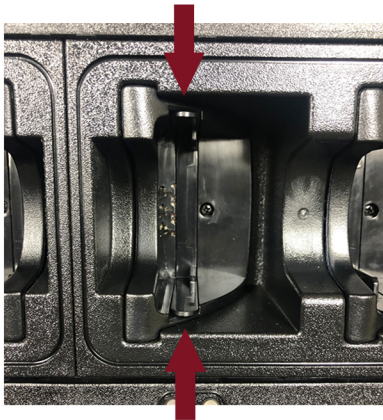




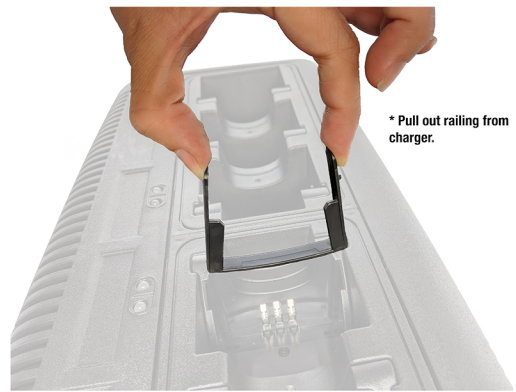
This charger is universal and features a railing that makes it compatible with both round-back and flat-back style batteries. If your battery doesn't fit the charger, simply flip the railing by following the directions below to allow your batteries to fit.

*** Only for models SWUC-4851N & SWUC-4497L**

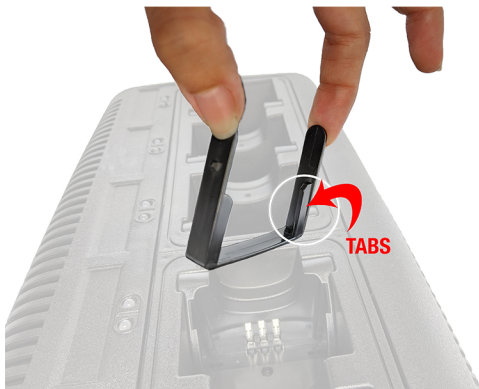
1. Locate the railing, which has two rounded tabs.



2. Pinch the railing to release it from the charger.



3. Flip the railing orientation so the bottom tabs are further away from or closer to the wall of the charger.



4. Snap the railing back into place. You may need to push it firmly until it fully locks.



When the bottom tabs are further away from the charger, it will fit round-back batteries



When the bottom tabs are closest to the charger, it will fit flat-back batteries

